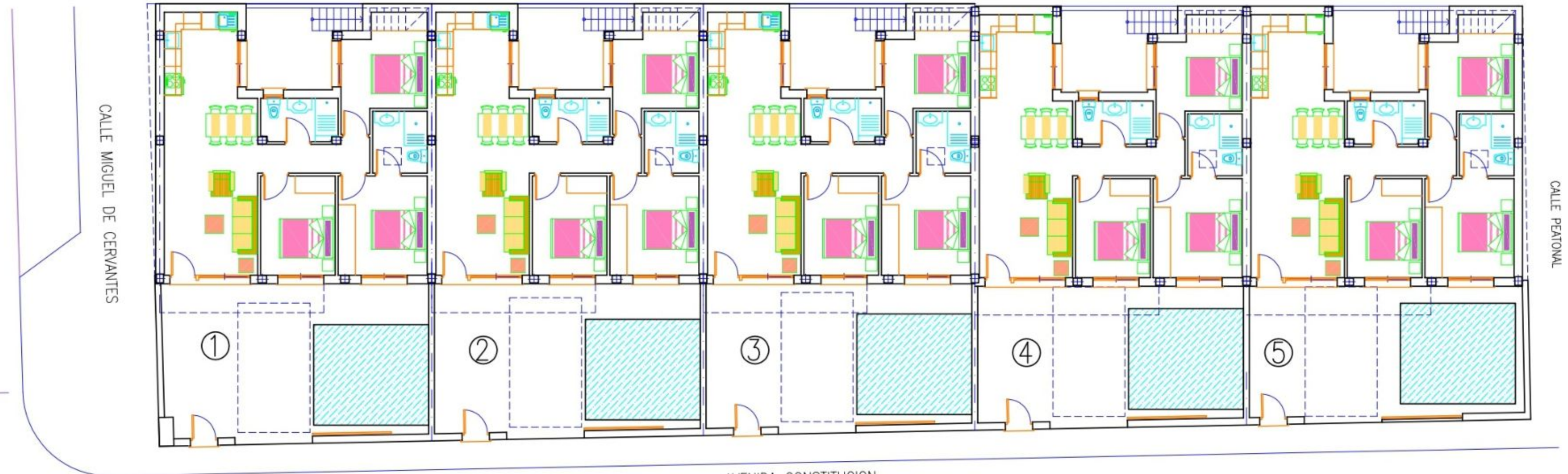


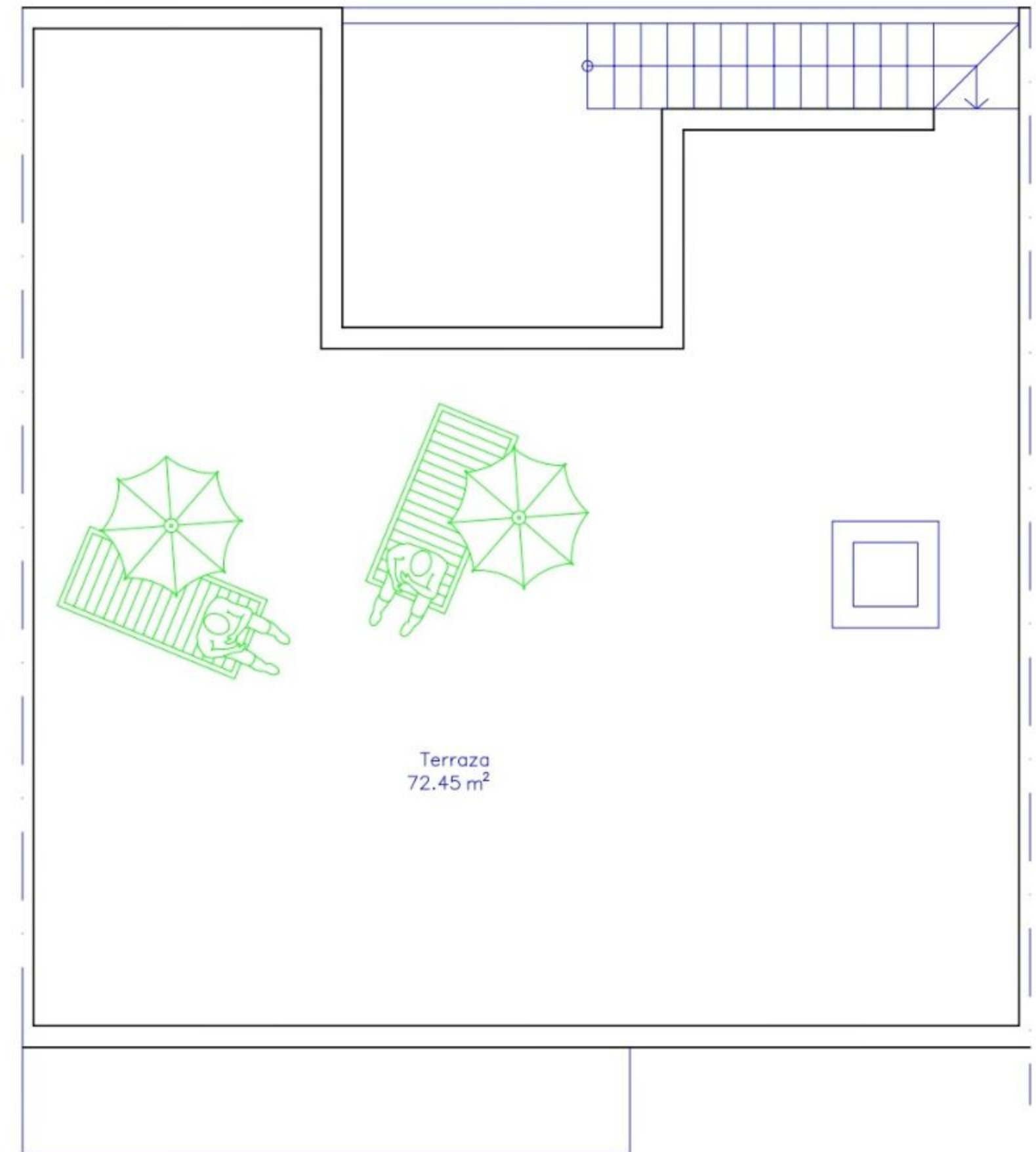
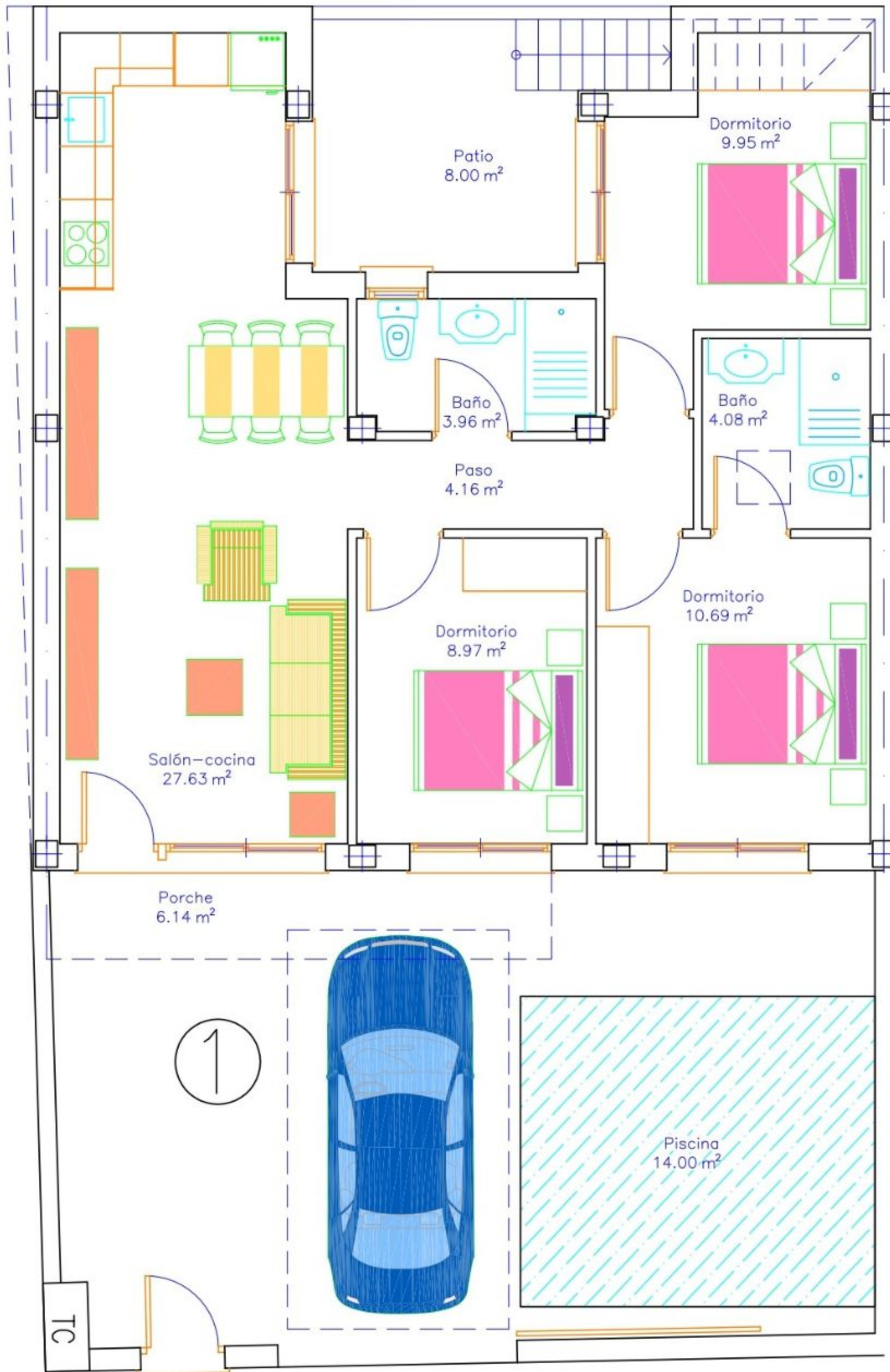
CUBIERTA



PLANTA BAJA

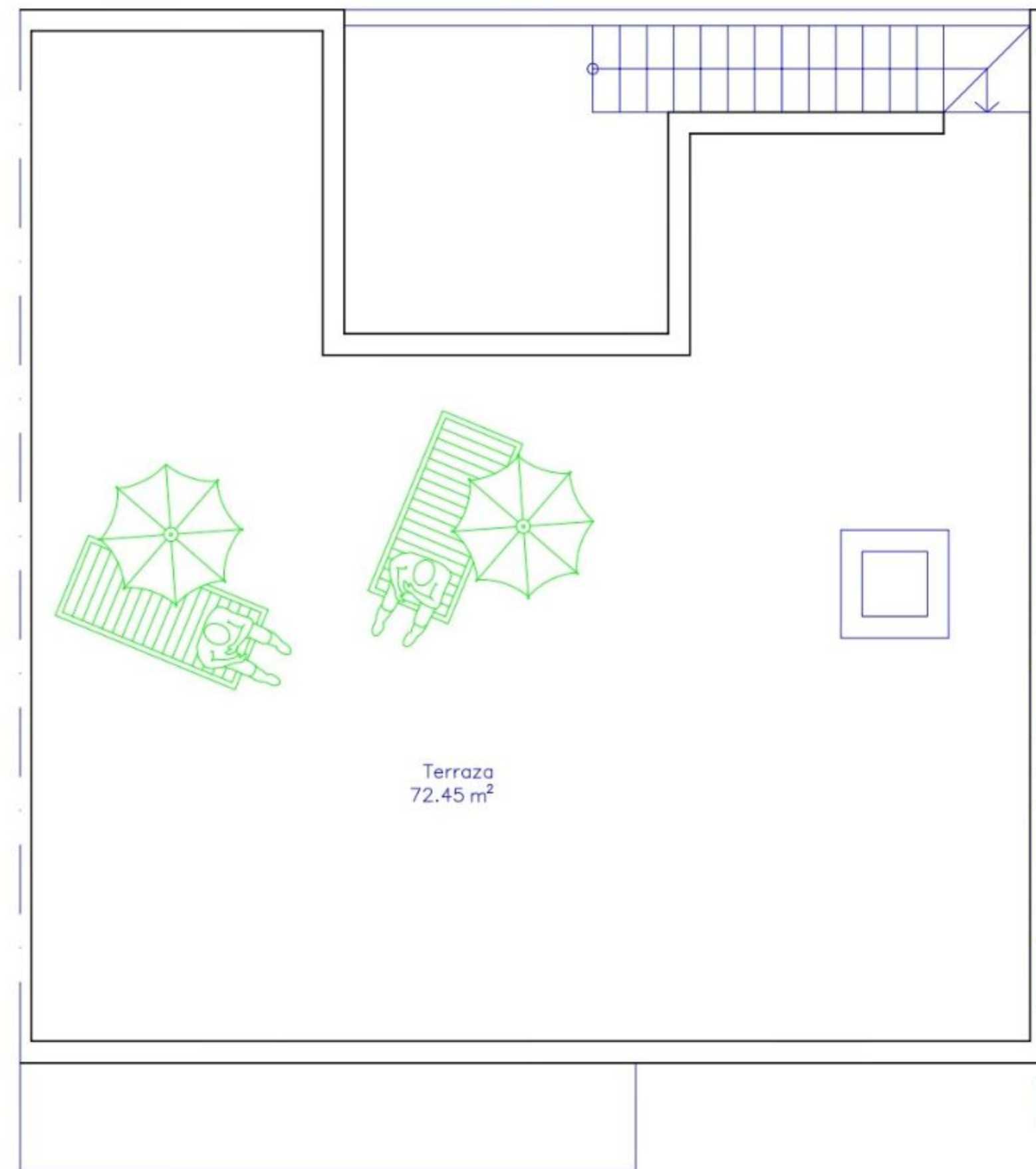
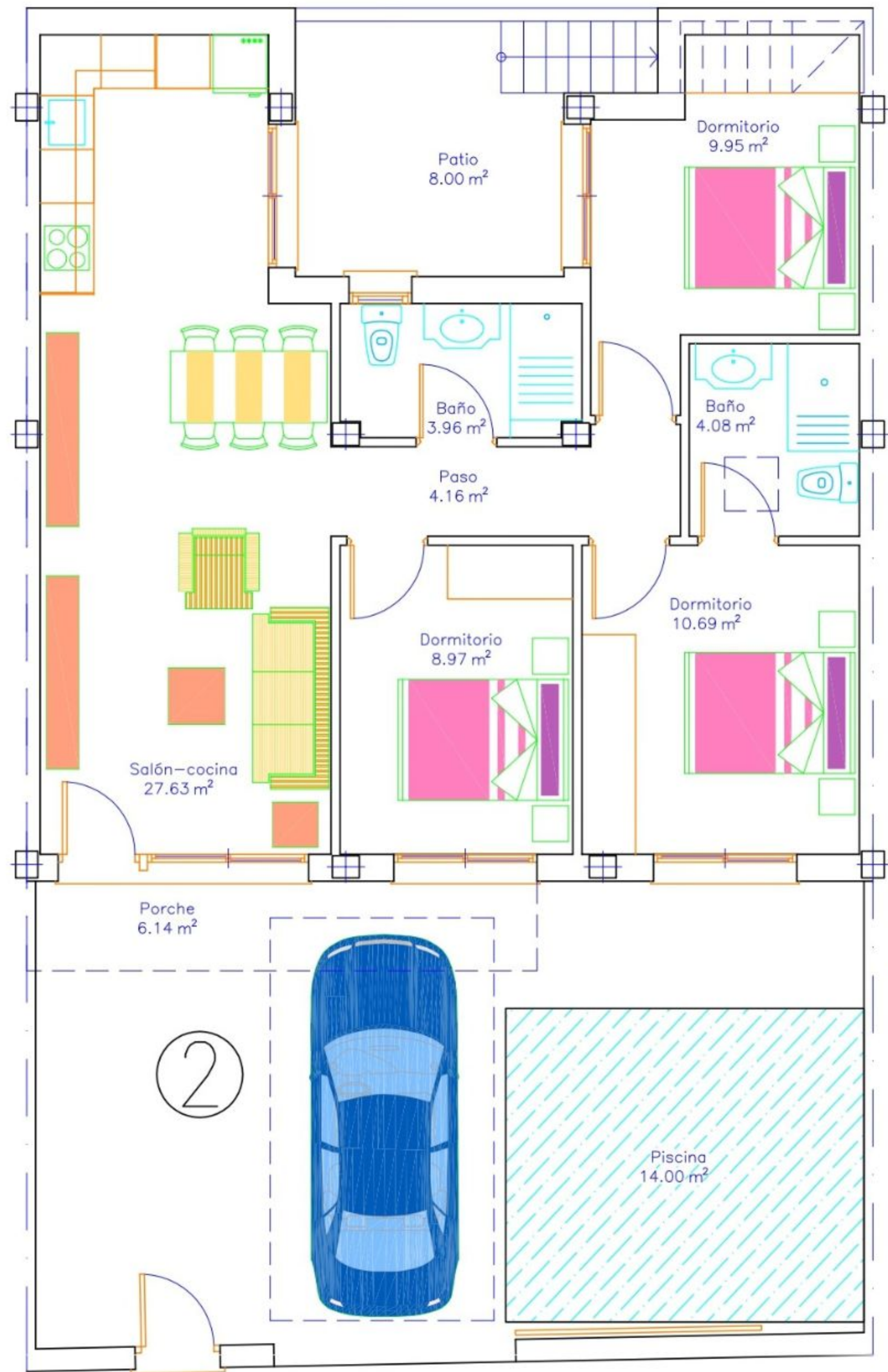


5 VIVIENDAS Y PISCINAS  
PLANTA GENERAL

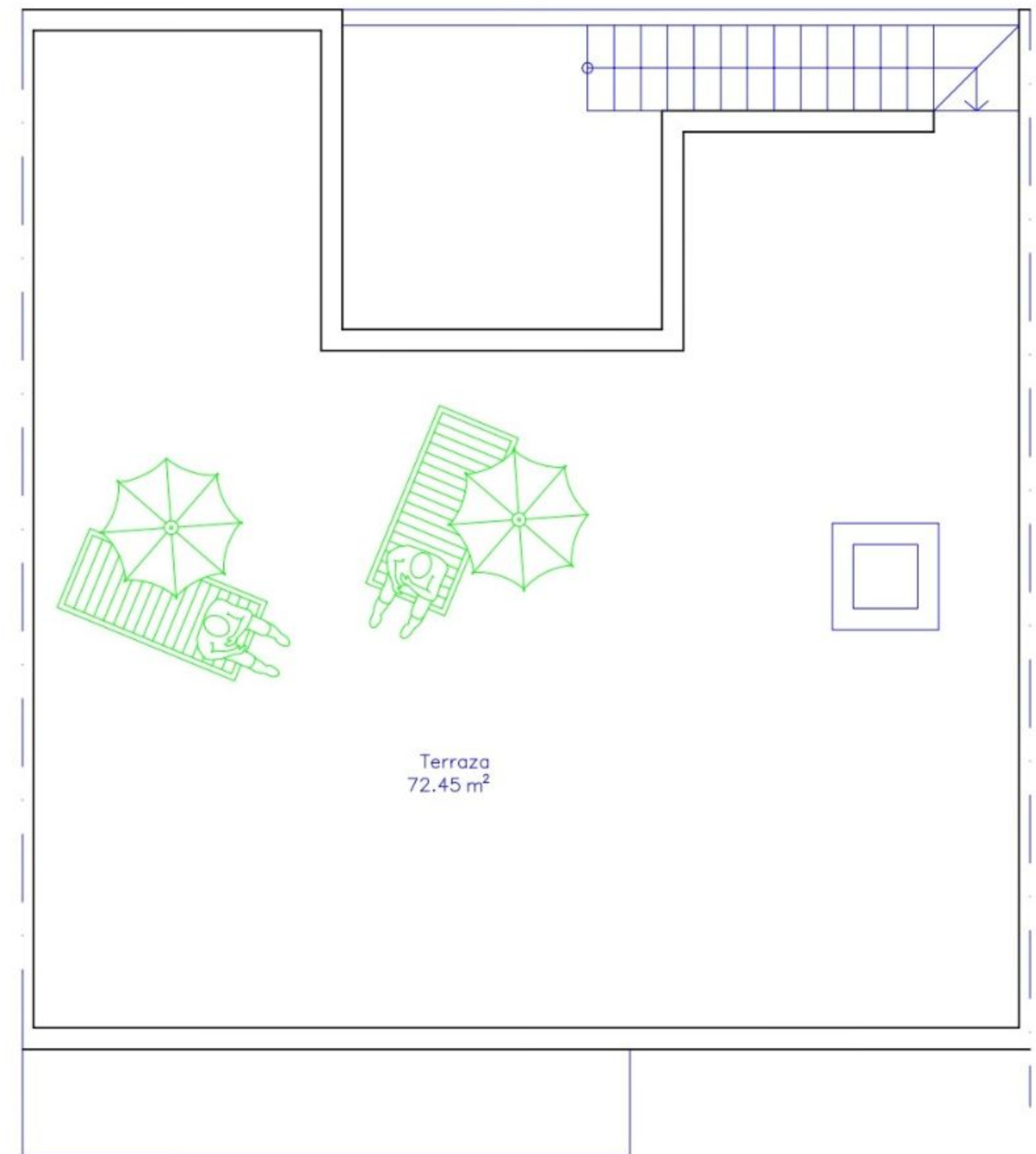
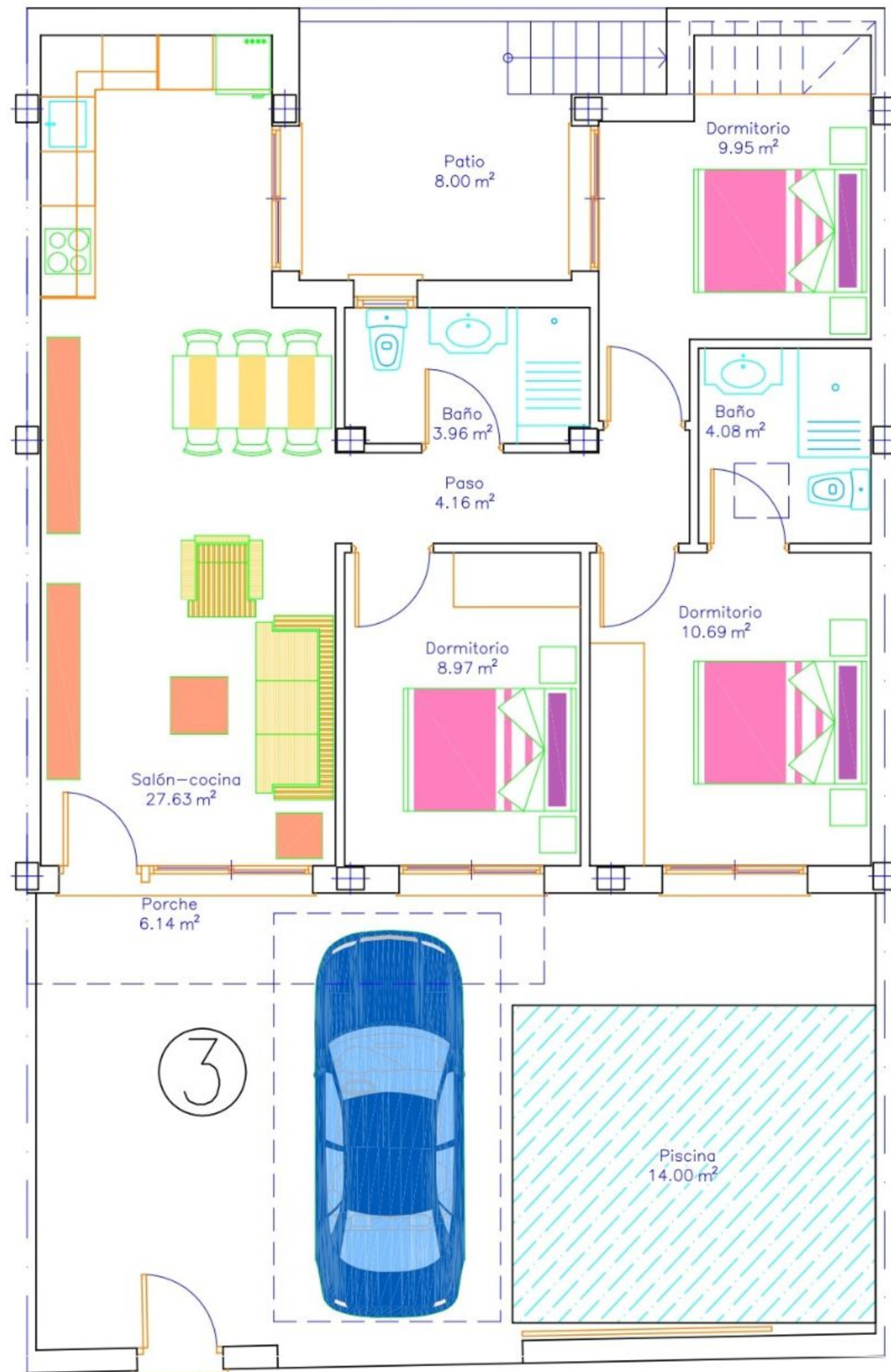


VIVIENDA 1

Sup. parcela=146,93m<sup>2</sup>  
 Sup. construida=82,14m<sup>2</sup>  
 Sup. terraza=72,45m<sup>2</sup>  
 Sum. piscina=14,00m<sup>2</sup>

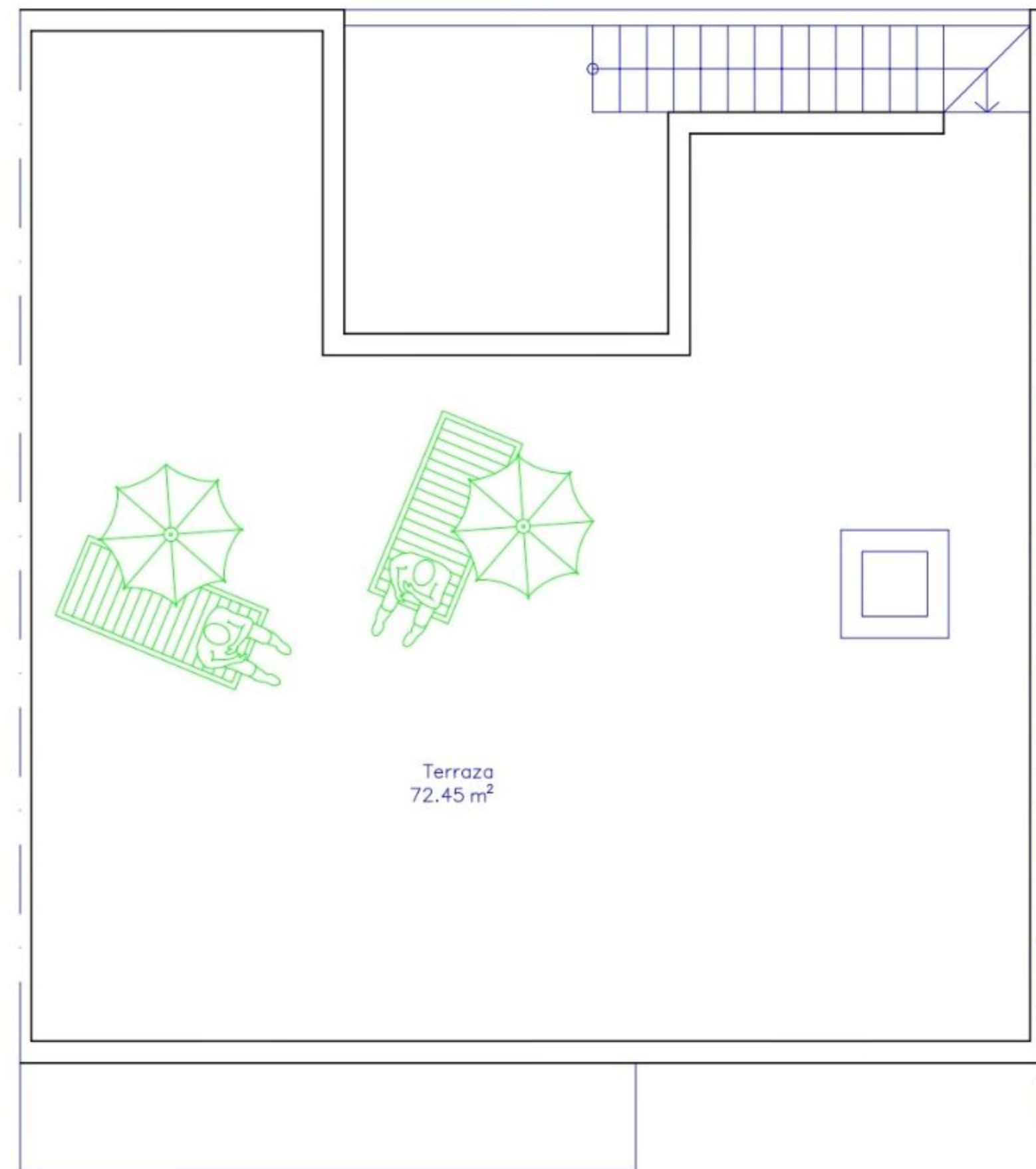


**VIVIENDA 2**  
 Sup. parcela=142,22m<sup>2</sup>  
 Sup. construida=82,14m<sup>2</sup>  
 Sup. terraza=72,45m<sup>2</sup>  
 Sur piscina=14,00m<sup>2</sup>

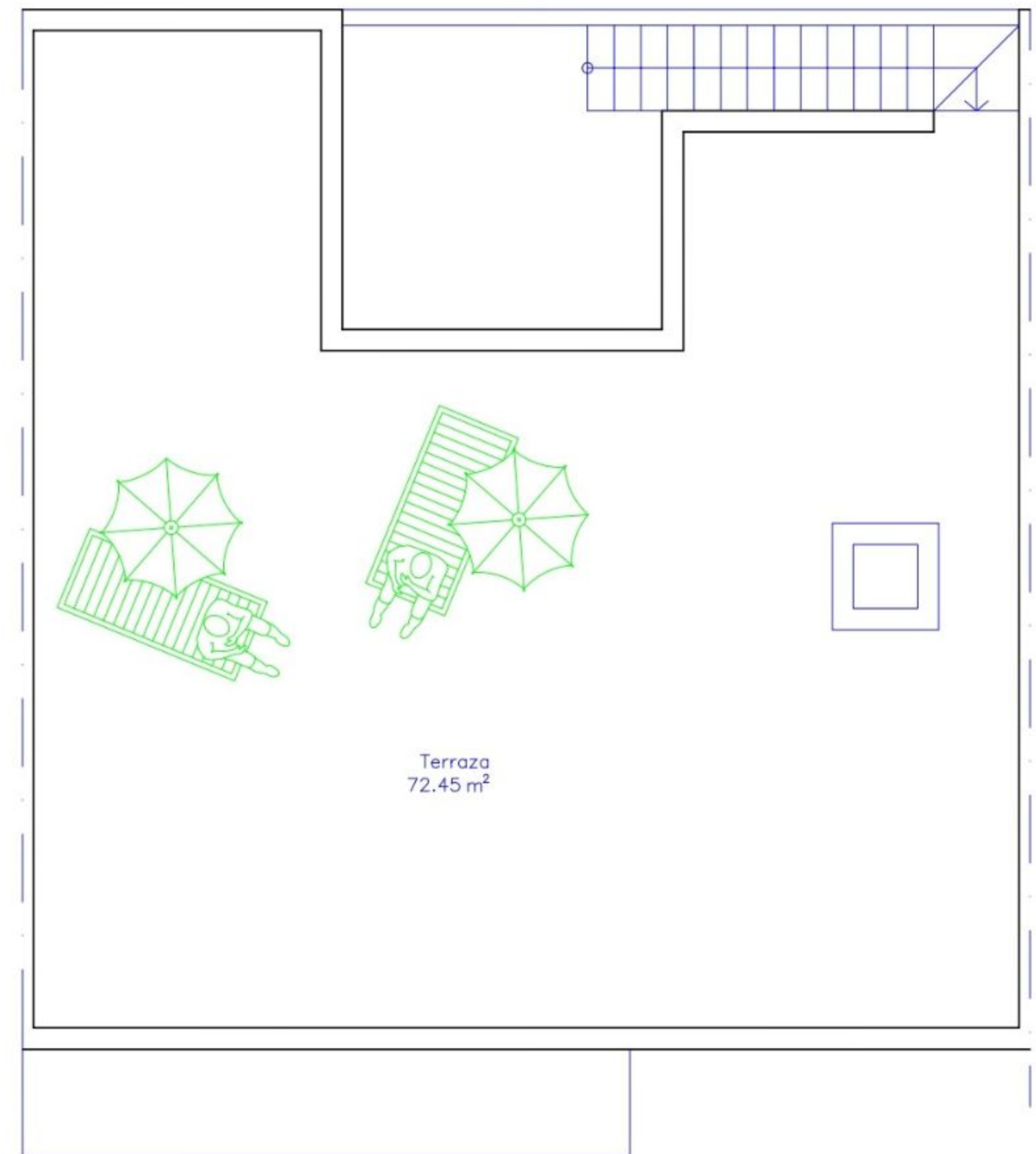
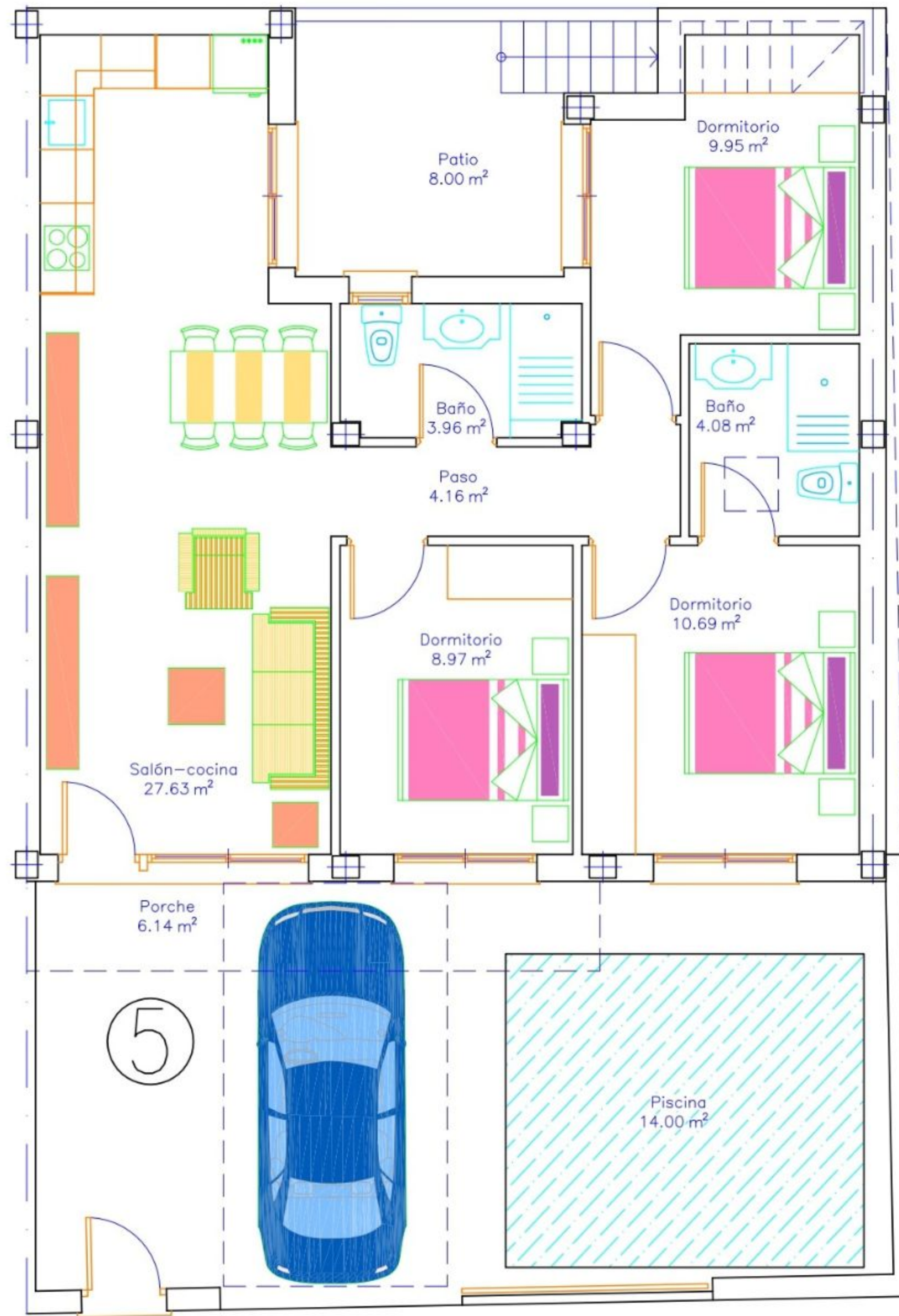


VIVIENDA 3

Sup. parcela=140,42m<sup>2</sup>  
 Sup. construida=82,14m<sup>2</sup>  
 Sup. terraza=72,45m<sup>2</sup>  
 Sup. piscina=14,00m<sup>2</sup>



**VIVIENDA 4**  
 Sup. parcela=135,18m<sup>2</sup>  
 Sup. construida=82,14m<sup>2</sup>  
 Sup. terraza=72,45m<sup>2</sup>  
 Sup. piscina=14,00m<sup>2</sup>



  
**Aire Limpio**  
 AVILESES, MURCIA

VIVIENDA 5

Sup. parcela=140,31m<sup>2</sup>  
 Sup. construida=82,14m<sup>2</sup>  
 Sup. terraza=72,45m<sup>2</sup>  
 Sup. piscina=14,00m<sup>2</sup>